

Product Data

Fine Particle Silicone Resin **TOSPEARL 2000B***

TOSPEARL 2000B* is spherical silicone resins available in 6 micron particle size respectively. This unique material offers excellent water repellency, lubricity, and heat resistance and has been found to offer substantial benefits when used in cosmetic products.

CTFA DESIGNATION

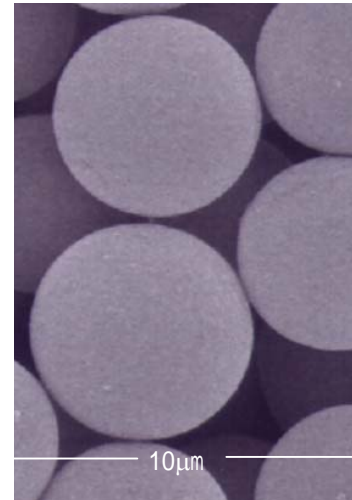
Polymethylsilsesquioxane

KEY PERFORMANCE PROPERTIES:

- ◆ Excellent lubricity
- ◆ Imparts soft, smooth, silky feel
- ◆ Prevents pigment and powder agglomeration

APPLICATIONS

- ◆ Foundation
- ◆ Powder
- ◆ Cream
- ◆ Lipstick
- ◆ Eye Shadow



TYPICAL PRODUCT DATA

Property	Value
Appearance	Truly spherical, fine white particle
Mean particle diameter, mm	6
Moisture content, (105°C, 60min) %	< 5
PH*	7.5
True specific gravity (25°C)	1.32
Particle size smaller than 2mm, %	< 15
Particle size larger than 10mm, %	< 15
Heating loss, (250°C, 30min) %	< 5

Note: *2% dispersed in a solution of Methanol :Water=1:1

FORMULATING WITH TOSPEARL RESINS

The following formulations are provided for your use in assessing TOSPAERL 2000B*
(POWDER FOUNDATION WITH SMOOTH, SILKY FEEL)

Ingredients		Parts/wt(%)
Part A	Talc 6.	6
	Titanium Dioxide	19.2
	Mica (and) Titanium Dioxide	4.8
	Iron Oxide	11.2
	Zinc Oxide	6.2
	Barium Sulfate	13.7
Part B	Dimethicone (TSF451-5A)	5.5
	Lanolin	8.2
	Petrolatum	1.4
	Liquid Petrolatum	1.4
	Isopropyl Myristate	1.4
Part C	Polymethylsilsesquioxane (TOSPAERL 2000B*)	20.4
Part D	Fragrance	q.s.
	Preservative	q.s.

(PROCEDURE)

1. Mill all of the pigments in Part A together.
2. Add Part B, Part C, and Part D to Part A with high shear mixing.
3. Press into suitable containers.

HANDLING AND SAFETY

- ◆ Wear eye protection, protective gloves and mask at all times when working with this product.
- ◆ Maintain adequate ventilation in the work area at all times.

STORAGE

- ◆ Store in a cool, dry place out of direct sunlight.
- ◆ Keep out of the reach of the children.

PACKAGING

1kg plastic bottle

10kg corrugated cardboard box

FOR INDUSTRIAL USE ONLY

It is the responsibility of the user to determine the suitability of any Momentive Performance Materials Japan product for any intended application. NEVER USE ANY MOMENTIVE PERFORMANCE MATERIALS JAPAN PRODUCT FOR IMPLANTATION OR INJECTION INTO THE HUMAN BODY. Specifications are available by contacting Momentive Performance Materials Japan. Typical property data values should not be used as specifications. Inasmuch as Momentive Performance Materials Japan LLC has no control over the use to which others may put the material, it does not guarantee that the same results as those described herein will be obtained. Each user of the material should make his own tests to determine the suitability of the material for his own particular use. Statements concerning possible or suggested uses of the materials described herein are not to be construed as constituting a license under any Momentive Performance Materials Japan patent covering use or as recommendations for use of such materials in the infringement of any patent. Material Safety Data Sheets are available upon request from Momentive Performance Materials Japan. The contents of this catalog are subject to change without notice. No part of this data may be reproduced without the prior approval of Momentive Performance Materials Japan.



Momentive Performance Materials Japan LLC

<http://www.momentive.com>

Technical Answer Center (Japan): Phone: +81-276-20-6182 FAX: +81-276-31-6259
Tokyo Head Office: Phone: +81-3-5544-3111 FAX: +81-3-5544-3122